



Introduction to Yuhana_{0.01} System

By Lain Yans Merlin
Monday, July 21, 2003

Team Yuhana



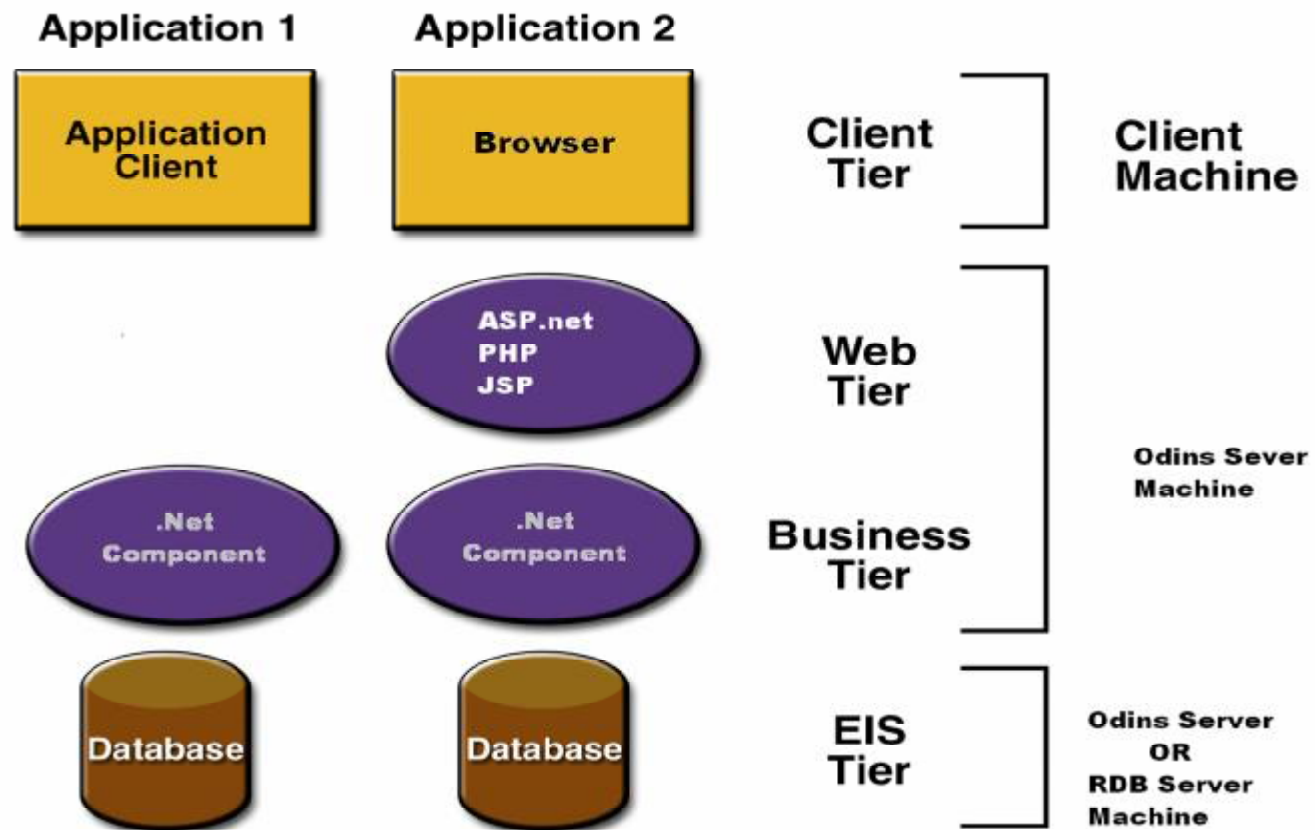
What is Yuhana?

n This software is to provide an open source ,simple but featured, pure .Net implement , portable .Net application server software. It provides an object persistent mechanism , enable to deploy u exist .Net component as a web service component.

n [Project Summary page at sf.net](#)



The Role of Yuhana



YUHANA



Why We Develop Yuhana?



Open Source

- n For oss community
- n I'd like toJ

YUHANA



Understand the Yuhana

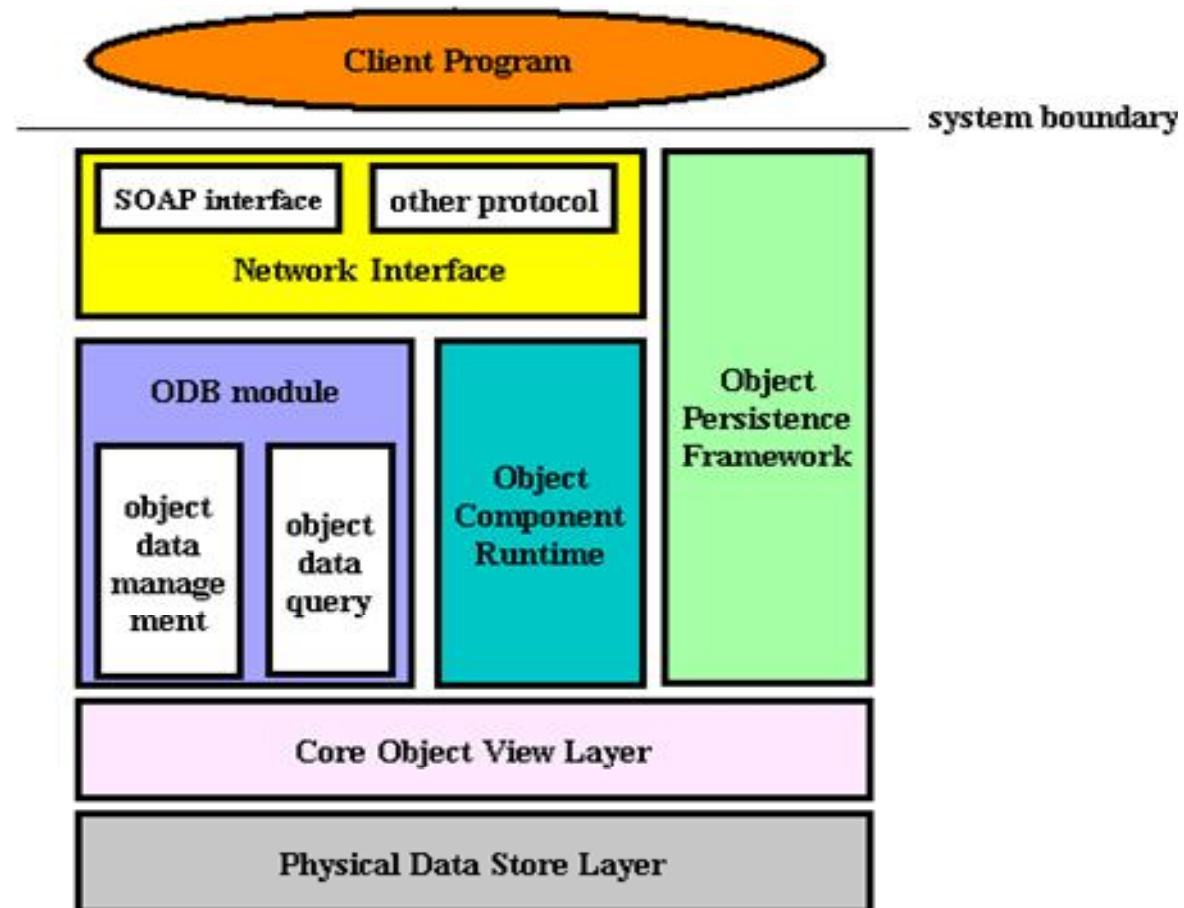


The Goal Features of Yuhana 0.1

- n A simple Object persistence mechanism
- n A management component runtime
- n A light web service parse engine
- n A light HTTP host
- n Every core function can be reused as a lib
- n Compatible with various .Net runtime



Architecture 0.1





System Functions provide
web services interface

- n User Manage Service
- n Data Manage Service
- n Component Manage Service
- n System Manage Service

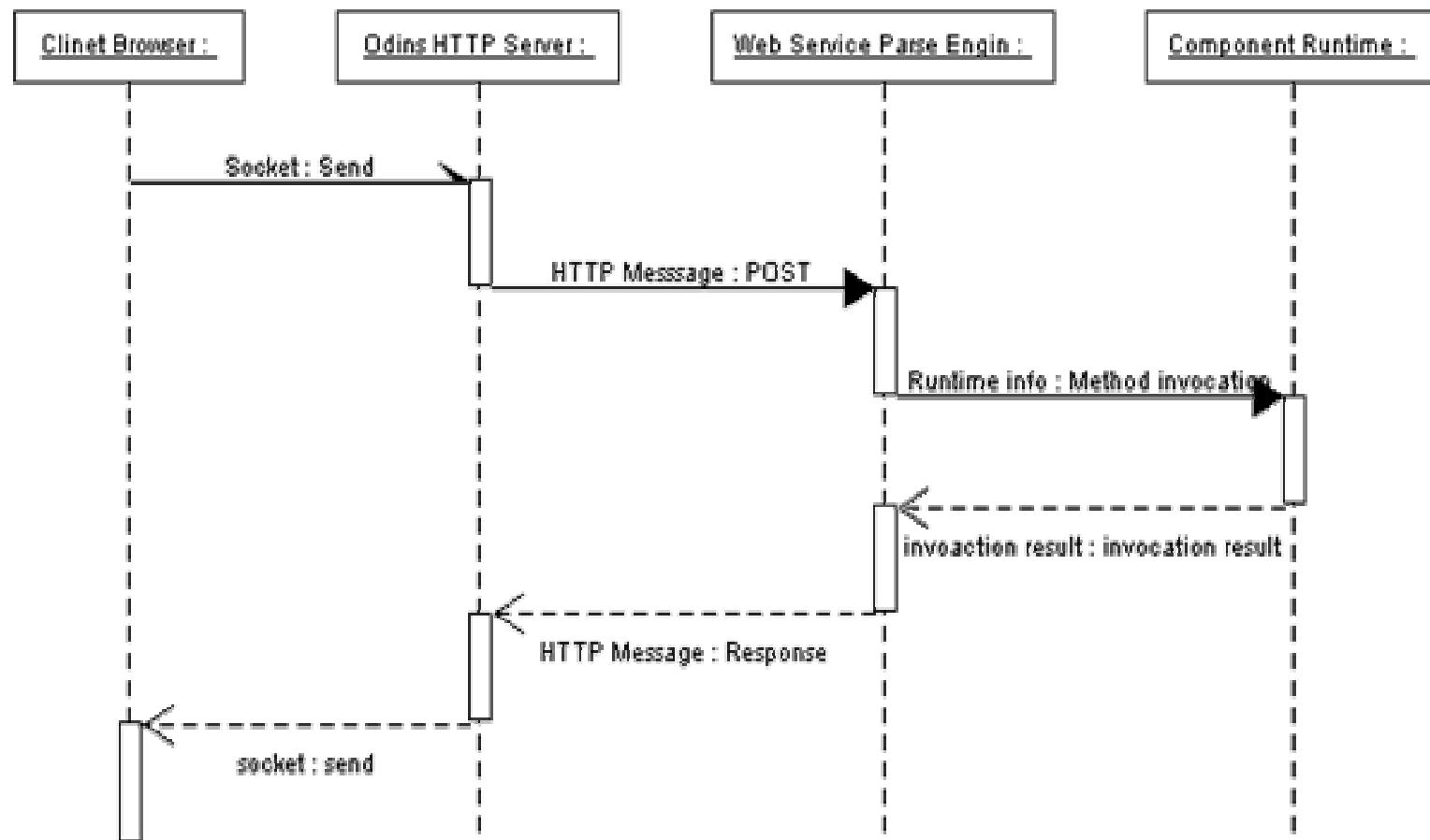


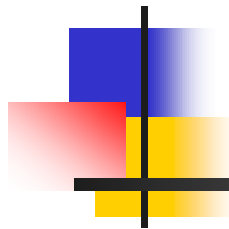
The Web Service Feature

- n Unlike MS 's implement, our implement does not depend on the ASP. net module. We directly parse the soap request and bind it to the proper local method, then parse the result of method execution to a soap message and send it to the client via HTTP protocol.
- n ...



How it work



A decorative graphic consisting of a vertical black line and a horizontal black line intersecting. To the left of the intersection are three overlapping squares: a blue one on top, a red one on the left, and a yellow one on the bottom right.

An Example with Yuhana

The Yuhana.Net PetShop

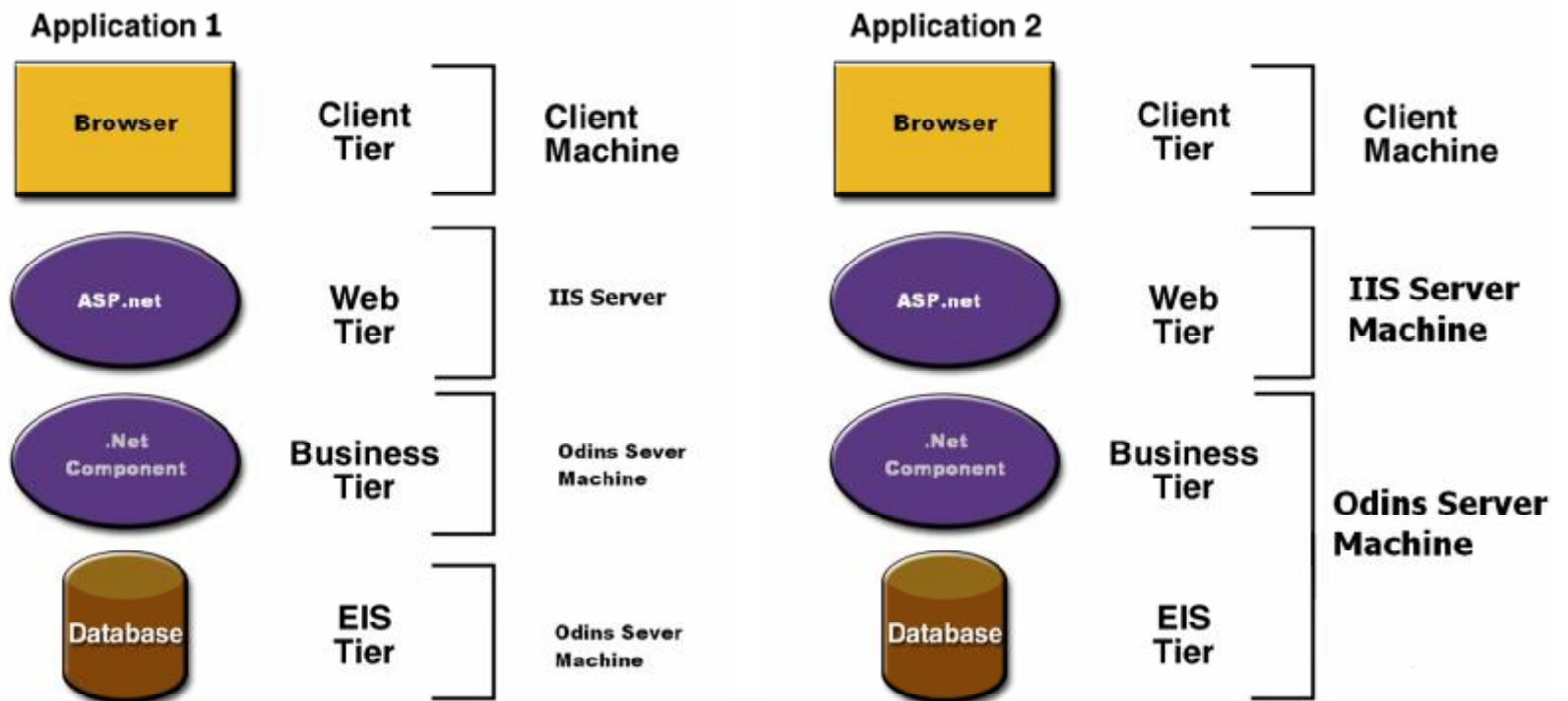


Introduction

- n Yuhana.Net PetShop is a modified version of .Net PetShop 2.x which can run with Yuhana system.
- n Changes We Make:
- n There is no modifications with the presentation tier and business logic.
- n We modify those codes access the SQL Server for data via storage process, and make them use the “Yuhana data-storage function” directly or via a web service interface.



The Deployment Architecture





Live Demo

- n A Flash Demonstration of Yuhana.net pet shop can be found [here](#)
- n You can also run it yourself, see this [HOW-TO](#) document

YUHANA



Conclusion



Summary

- n The Yuhana is going to provide a simple solution for multi-tier application.



Advantages & Disadvantages

- n Advantages

Light weight, portable, simple, and more...

- n Disadvantages

Not full featured, not fit for heavy load, and more...



TODO

- n Fix bugs
- n Add more features
- n Make it can integrate with other open source project easily
- n Make it compatible with mono runtime
- n More if you need :)